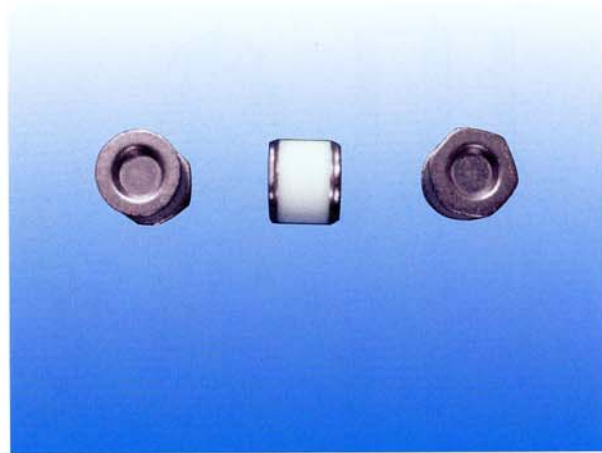


SD8 Series (Surface Mount)

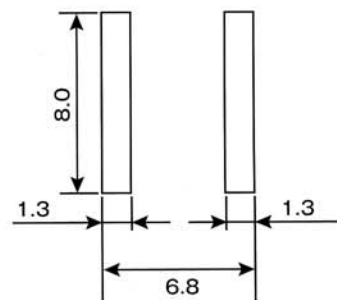
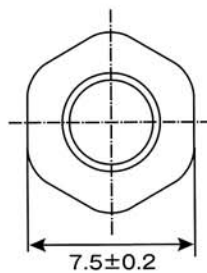
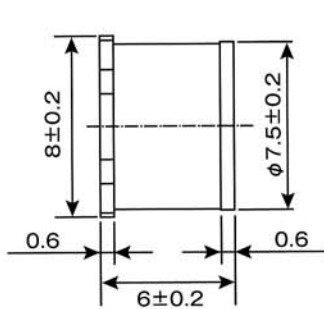
Part Number	UL Approved P/N See Note3	SD8-75	SD8-90	SD8-145	SD8-230	SD8-250	SD8-300	SD8-350	SD8-400	SD8-470	SD8-600
DC Sparkover Voltage	100V/s(V)	75V±20%	90V±20%	145V±15%	230V±15%	250V±15%	300V±15%	350V±15%	400V±15%	470V±15%	600V±15%
Impulse Sparkover Voltage	100V/μs(V)	≤500V	≤500V	≤500V	≤600V	≤600V	≤700V	≤700V	≤700V	≤700V	≤800V
	1kV/μs(V)	≤700V	≤700V	≤700V	≤750V	≤800V	≤850V	≤850V	≤850V	≤850V	≤1,000V
Insulation Resistance	See Note1	≥10,000MΩ	≥10,000MΩ	≥10,000MΩ	≥10,000MΩ	≥10,000MΩ	≥10,000MΩ	≥10,000MΩ	≥10,000MΩ	≥10,000MΩ	≥10,000MΩ
Capacitance	1MHz	≤1.0pF	≤1.0pF	≤1.0pF	≤1.0pF	≤1.0pF	≤1.0pF	≤1.0pF	≤1.0pF	≤1.0pF	≤1.0pF
DC Holdover Voltage	See Note2	≤52V	≤52V	≤80V	≤135V	≤135V	≤150V	≤150V	≤150V	≤150V	≤150V
Impulse Life	10/100μs, 500A	300times	300times	300times	300times	300times	500times	500times	500times	500times	500times
Impulse Discharge Current 8/20μs	Single	10kA	10kA	10kA	10kA	10kA	10kA	10kA	10kA	10kA	10kA
	Repeat 10 times (5 times each polarity)	5kA	5kA	5kA	5kA	5kA	5kA	5kA	5kA	5kA	5kA
AC Discharge Current 50Hz	Single, 9 Cycles	65A	65A	65A	65A	65A	65A	65A	65A	65A	65A
	Repeat 1 sec.	10A, 5times	10A, 5times	10A, 5times	10A, 5times	10A, 10times	10A, 10times	10A, 10times	10A, 10times	10A, 10times	10A, 10times



Construction and dimensions

Recommended land pattern

Units: mm



Note:

1. Insulation Resistance shall be measured with the following voltages for each nominal DC Sparkover Voltage.

Nominal DC Sparkover Voltage	Measuring Voltage
75 - 145V	DC 50V
230 - 400V	DC 100V
470 - 800V	DC 250V

2. DC Holdover Voltage shall be measured in accordance with the ITU-T K.12, Test Circuit or the IEEE C62.31-1987 Test Circuit.

3. Recognized under UL497B, File Number E140906.