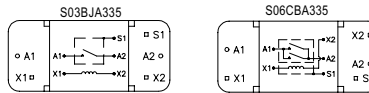
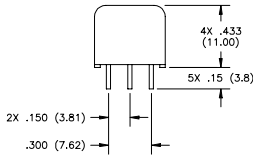
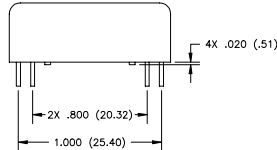
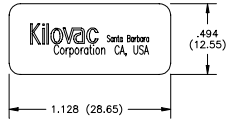
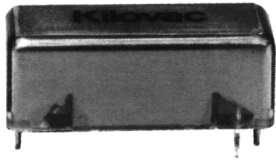


Kilovac S03BJA335 & S06CBA335 No Load Switching



1. Dimensions in parentheses are in millimeters.
2. Pin dimension tolerances are as follows:
Lengths: +/- .04 (1.0)
Spacing: +/- .006 (.15)
3. Pins A1 and A2 are .028 (.71); pins S1, X1 and X2 are .025 (.63) square

Features:

- Small size, high performance relays
- Vacuum dielectric for low leakage current applications
- RF ratings to 30 MHz
- SPST normally open contacts

PRODUCT SPECIFICATIONS

Part Number	Units	S03BJA335	S06CBA335
Contact Arrangement		SPST-NO	SPST-NO
Contact Form		A	A
Voltage Ratings	kV Peak		
Between Contacts		1.5	2
Contacts to Coil		1.5	2
Contacts to Screen		1.5	2
Coil to Screen5	.5
Carry Current , Maximum	Amps		
@ DC		3	6
@ 30 MHz		3	6
Contact Resistance	mohm	0.050	0.025
Contact Capacitance	pF		
Between Open Contacts		0.3	0.3
Closed Contacts to Ground		4	6
Operate Time [4]	ms	0.8	2
Release Time [4]	ms	0.5	0.5
Shock, 11 ms 1/2 Sine (Peak)	G's	100	100
Vibration	G's Peak	30	30
.....	Hz	10 to 2000	10 to 2000
Temperature Range	°C		
Operating		-20 to +70	-20 to +70
Storage		-35 to +110	-35 to +110
Initial Insulation Resistance	GigaOhms	10	10
Mechanical Life	Cycles	100 Million	100 Million
Weight, Nominal	oz.	0.24	0.24

COIL DATA

	S03BJA335	S06CBA335	Unit
Volts, Nominal	28	24	Vdc
Maximum Voltage	33	30	
Pickup, Maximum	19	16	
Dropout, Maximum	2	4	
Coil Resistance	2500	1000	Ohms
RF Screen, Inner	S1	S1	Pin #
RF Screen, Outer	N/A	N/A	
EM Shield	N/A	N/A	

4. Operate and release times are with external diode suppressions, @ 25°C.