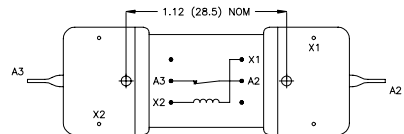
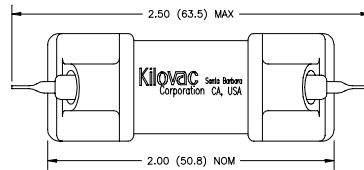
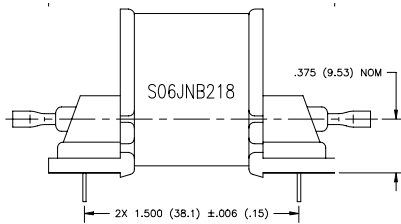
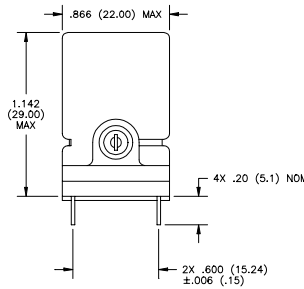
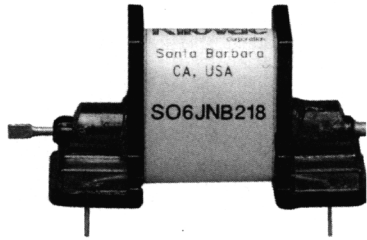


**Kilovac S06JNB218** Make & Break Load Switching



1. Dimensions in parentheses are in millimeters.
2. Pin dimension are .024 (.61) nom. square.
3. Recommended P.C.B. holes: .043 (1.0)
4. Coil terminals are polarity sensitive for the normally closed B version. X1 is positive, +, and X2 is negative, -.

**Features:**

- Highly reliable RF relay
- Vacuum dielectric for power switching low current loads
- 100 million cycle mechanical life
- Form B relay
- 8 amps at DC; 6 amps at 30 MHz

**PRODUCT SPECIFICATIONS**

Part Number	Units	S06JNB218
Contact Arrangement .....		SPST-NC
Contact Form .....		B
Voltage Ratings .....	kV Peak	
Between Contacts .....		8
Contacts to Coil .....		8
Contacts to Screen .....		N/A
Coil to Screen .....		N/A
Carry Current , Maximum .....	Amps	
@ DC .....		8
@ 30 MHz .....		6
Contact Resistance .....	ohms	0.050
Contact Capacitance .....	pF	
Between Open Contacts .....		0.6
Closed Contacts to Ground .....		4
Operate Time [5] .....	ms	3
Release Time [5] .....	ms	2
Shock, 11 ms 1/2 Sine (Peak) .....	G's	100
Vibration .....	G's Peak	20
.....	Hz	10 to 500
Temperature Range .....	°C	
Operating .....		-40 to +85
Storage .....		-55 to +125
Initial Insulation Resistance .....	GigaOhms	10
Mechanical Life .....	Cycles	100 Million
Weight, Nominal .....	oz.	0.16

[5] Operate and release times are with external diode suppression, @ 25°C.

**COIL DATA**

	S06JNB218	Unit
Volts, Nominal	12	Vdc
Maximum Voltage	18	
Pickup, Maximum	6	
Dropout, Maximum	2	
Coil Resistance	380	Ohms
RF Screen, Inner	N/A	Pin #
RF Screen, Outer	N/A	
EM Shield	N/A	